

ELECTRIC ARTICULATING BOOM LIFTS

AB22EJ PLUS (AB710EJ PLUS)

Compliant with CE/EAC/AS standards

PRODUCT HIGHLIGHTS

Outstanding Strength Both Indoors and Outdoors

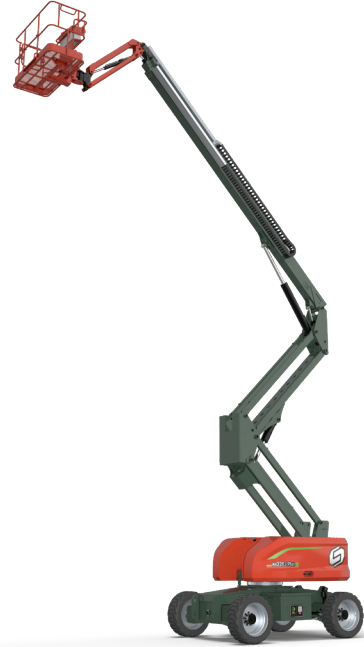
- Smooth off-road and quiet indoor operation
- 4WD, 40% gradeability
- Standard active oscillation, excellent exibility

Excellent Performance, Safety and Reliability

- Smart display for easy machine status and fault diagnosis
- Auxiliary power system
- Rexroth controller comply with ISO13849 standard

Comfortable and Efficient

- The main boom and secondly boom are equipped with angle sensors, to automatically reduce speed and act as a buffer
- Proportional steering speed reduction technology



Standard Features

Active oscillating function	5-in display screen	4WD × 2WS
Proportional control with 3 joysticks	Automotive-grade sleeves for all pipes	Emergency lowering system
Hydraulic platform leveling	Max tilt rating to 5°	Weighing system
Tilt protection system	Horn & buzzer	Emergency stop system
Flashing beacon	Foot switch	Fault diagnosis system
Foam-filled non-marking tires	2.44 m(8') platform with swinging gate	Manual storage box
Secondary guarding device	Telematics-ready connector	

Options & Accessories

AC power to platform	Solid tires	1.45m (4'9") platform with swinging gate
Half mesh (for platform with swinging gate)	1.83 m(6') platform with swinging gate	Platform work light
Glazier kit(for platform with swinging gate)	Overhead anti-collision device	Anemometer
4 WD×4 WS		

SINOBOOM™

PARTNERS IN ACCESS™

SINOBOOM.COM | SALES@SINOBOOM.COM

NO.128 EAST JINZHOU AV., NINGXIANG HI-TECH INDUSTRY PARK, CHANGSHA, HUNAN, CHINA, 410600

ELECTRIC ARTICULATING BOOM LIFTS

AB22EJ PLUS (AB710EJ PLUS)

Compliant with CE/EAC/AS standards

Model	AB22EJ PLUS (AB710EJ PLUS)
Dimensions	
Max Platform Height	21.6 m (70'10")
Max Working Height	23.6 m (77'5")
Max Horizontal Reach (230 kg,340 kg,454 kg)	13.4 m/11.9 m/10.45 m (44'/39'/34'3")
Max Up and Over Clearance	8.9 m (29'2")
A Stowed Length	9.95 m (32'8")
B Stowed Width	2.49 m (8'2")
C Stowed Height	2.68 m (8'10")
Stowed Length (Transport)	7.73 m (25'4")
Stowed Width (Transport)	2.49 m (8'2")
Stowed Height (Transport)	2.95 m (9'8")
D Wheelbase	2.49 m (8'2")
Ground Clearance	0.35 m (1'2")
Platform Size (L×W×H)	2.44×0.91×1.1 m (8'×3'×3'7")
Performance	
Max Platform Capacity (Unrestricted/Restricted)	230 kg/340 kg/454 kg (507 lbs/750 lbs/1,000 lbs)
Max Platform Occupants(Unrestricted/Restricted)	2 persons/ 3 persons
Drive Speed (Stowed)	0 ~ 4.8 km/h (0 ~ 3 mph)
Drive Speed (Raised)	0 ~ 1.1 km/h (0 ~ 0.68 mph)
Gradeability	40%
Turntable Rotation	360° / Continuous
Platform Rotation	180°
Tilt Rating	5°
Turning Radius (Inside/Outside)—Two-wheel steering	2.4 m/5.55 m (7'10"/18'3")
Turning Radius (Inside/Outside)—Four-wheel steering	1.63 m/3.59 m (5'4"/11'9")
Turntable Tail-Swing	0.89 m (2'11")
Max Allowable Side Force	400 N (90 lbf)
Max Allowable Wind Speed	12.5 m/s (28 mph)
Tire Spec/Type	355/55D625 Foam-filled
Power	
Drive × Steer	4 WD×2 WS
Batteries (Voltage/Capacity)	2×24 V,480 Ah (5 hr) (lead acid battery) 51.2 V / 500 Ah (lithium battery)
Hydraulic Tank Capacity	130 L (28.6 gal (UK)/34.3 gal (US))
System Voltage	12V DC
Weight	
Weight	11,200 kg (24,691 lbs)
Standards Compliance	CE/EAC/AS

