

ENGINE POWERED ARTICULATING BOOM LIFTS

AB22J PLUS (AB710J PLUS)

Compliant with AS 1418 · 10 standards

HIGHLIGHTS

3 Heavy-duty Loading Capacities

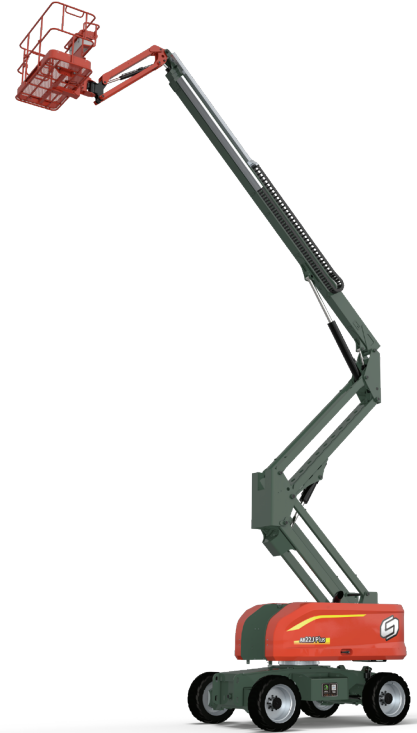
- 230 kg (unrestricted) / 340kg (restricted) / 454kg (restricted)
- Automatic switching according to load to maximize machine performance, providing a balance between large operating range and high operating efficiency

Reliable Performance

- 4-wheel powerful drive, with a gradeability of up to 40%, and strong outdoor climbing ability
- Continuous 360 ° turntable rotation, for more flexible and efficient operation
- Active oscillating function in both operating and non-operating states, and a tilt rating of up to 5 °, providing adaptability to more rugged road surfaces and strong field operation ability

Flexible and Efficient

- Shorter than a telescopic boom lift, it can easily cross obstacles, work more flexibly, and has a wider range of applications
- Can be transported by tow trucks, for convenient, low-cost transportation
- Can be transported directly in containers with low transportation costs



Standard Features

| | | |
|-----------------------------|---------------------------|---------------------------|
| 4WD×4WS | Fault diagnosis system | Telematic ready |
| Hydraulic platform leveling | Display screen | Battery isolator |
| Flashing beacon | Emergency lowering system | Secondary guarding system |
| Proportional control | Weight management system | White noise alarm |
| Tilt protection system | Non-marking tires | Half-mesh for platform |
| Manual storage box | | |

Options & Accessories

| | | |
|---------------------------|----------------------|------------------|
| Wheel nut indicators | Panel lifting system | Telematic device |
| Fire extinguisher/Bracket | Mine spec | Driving light |
| Pipe lifting system | AC power to platform | |

SINOBOOM™

PARTNERS IN ACCESS™

🌐 SINOBOOM.AU | 📞 03 8905 1550

HO: BRISBANE – 39 ALTA ROAD, CABOOLTURE QLD 4510 | SYDNEY – 1/3 VOYAGER CT, GLENDENNING NSW 2761

MELBOURNE – 32-34 MARNI, DANDENONG SOUTH VIC 3175

ENGINE POWERED ARTICULATING BOOM LIFTS

AB22J PLUS (AB710J PLUS)

Compliant with AS 1418 · 10 standards

| Model | AB22J PLUS (AB710J PLUS) |
|--|---|
| Dimensions | |
| Max Platform Height | 21.6 m (70'10") |
| Max Working Height | 23.6 m (77'5") |
| Max Horizontal Reach (230 kg/340 kg/454 kg) | 13.35 m/11.85 m/10.4 m (43'10"/38'11"/34'2") |
| Max Horizontal Working Envelope (230 kg/340 kg/454 kg) | 13.95 m/12.45 m/11 m (45'9"/40'10"/36'1") |
| Max Up and Over Clearance | 8.9 m (29'2") |
| A Stowed Length | 9.95 m (32'8") |
| B Machine Width | 2.49 m (8'2") |
| C Stowed Height | 2.68 m (8'10") |
| Stowed Length (Transport) | 7.73 m (25'4") |
| Stowed Height (Transport) | 2.95 m (9'8") |
| D Wheelbase | 2.49 m (8'2") |
| Ground Clearance | 0.42 m (1'4") |
| Platform Size (L×W×H) | 2.44 m × 0.91 m × 1.1 m (8' × 3' × 3'7") |
| Performance | |
| Max Platform Capacity (Restricted/ Restricted /Unrestricted) | 454 kg/340 kg /230 kg (1,000 lbs/750 lbs/507 lbs) |
| Max Platform Occupants | 2 persons (Unrestricted)/ 3 persons (Restricted) |
| Drive Speed (Stowed) | 0 ~ 4.8 km/h (0 ~ 3 mph) |
| Drive Speed (Raised) | 0 ~ 1.1km/h (0 ~ 0.68 mph) |
| Gradeability | 40% |
| Turntable Rotation | 360° /Continuous |
| Platform Rotation | 180° |
| Tilt Rating | 5° |
| Turning Radius(Inside/Outside)- Four-wheel steering | 1.63 m/3.59 m (5'4"/ 11'9") |
| Turntable Tail-Swing | 0.89 m(2'11") |
| Max Allowable Side Force | 400 N (90 lbf) |
| Max Allowable Wind Speed | 12.5 m/s (28 mph) |
| Tire Spec/Type | 355/55D625 (foam-filled) 36×14-20 (solid) |
| Power | |
| Drive × Steer | 4 WD × 4 WS |
| Engine | 36.4 kW /2200 rpm/D2.9 L4 / Deutz /EU Stage V /EPA Tier 4F 36 kW/2200 rpm/ F2.8CS449 / Cummins / China T4 43 kW/2500 rpm/QSF2.8T3NA60 / Cummins / China T3、 EU Stage 3A 36.8 kW/2200 rpm/YCF3050 |
| Hydraulic Tank Capacity | 130 L (28.6 gal (UK)/34.3 gal (US)) |
| Diesel Tank Capacity | 100 L (22.0 gal (UK)/26.4 gal (US)) |
| Control Voltage | 12 V DC |
| Weight | |
| Weight (Two/Four-wheel steering) | 11,880 kg (26,190 lbs)/12,000 kg (26,455 lbs) |
| Standards Compliance | AS 1418 · 10 |

